



**REPUBLIC OF TURKEY
MINISTRY OF PUBLIC WORKS
GENERAL DIRECTORATE OF LAND REGISTRY AND CADASTRE
(TKGM)**

LAND REGISTRY AND CADASTRE MODERNIZATION PROJECT

2008

Yusuf MEŞHUR

Head of Technical Inst. Department

S.Gökçe TURAN

Msc.Engineer



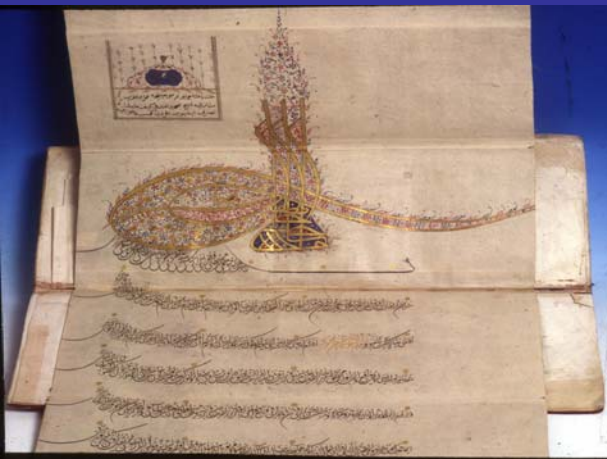
HISTORICAL BACKGROUND:

TURKEY HAS A LONG HISTORY OF PROTECTION OF PROPERTY RIGHTS .

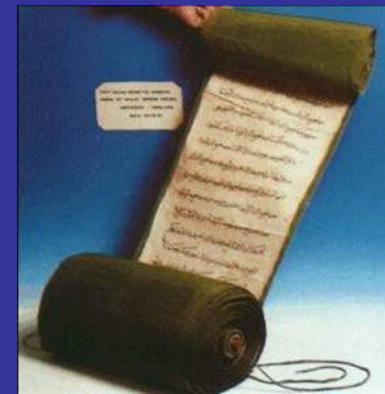
TURKISH DIRECTORATE GENERAL LAND REGISTRY AND CADASTRE AGENCY (TKGM) WAS FOUNDED IN 1925

MORE THAN %95 OF LAND IS MAPPED AND REGISTERED,

NEVERTHELESS SIGNIFICANT IMPROVEMENTS ARE NEEDED TO FULLY MODERNIZE THE TKGM AND BRING IT TO EUROPEAN STANDARTS.



WPLA Workshop CAVTAT October 2-3 2008





HISTORICAL BACKGROUND:

**IN OUR COUNTRY THE STATE IS RESPONSIBLE FOR REGISTERING
LAND REGISTRY(PLAN+REGISTER) WITHOUT EXCUSE.
(CONSTITUTION-CIVIL LAW)**

**DIRECTORATE-GENERAL OF LAND REGISTRY AND CADASTRE IS THE
INSTITUTION PERFORMING THIS RESPONSIBILITY UNDER THE SAME
ROOF WITH ITS LAND “ REGISTRY” AND “CADASTRE “ UNITS FOR
MANY YEARS.**

**THIS MODEL IS ALSO MENTIONED AT FIG 2014
AND SUITED TO EUROPEAN STANDARTS**





LAND REGISTRY AND CADASTRE PROJECT :

BY RECENT AMENDMENT ON CADASTRE LAW IT IS ADDED A MISSION TO ESTABLISH THE INFRASTRUCTURE OF THE SPATIAL INFORMATION SYSTEM SO WE BEGAN LOTS OF PROJECT TO ACHIVE THIS AIM. SUCH AS ARIP, CORS, TAKBIS.

TO ESTABLISH LAND REGISTRY AND CADASTRE DATA STANDARTS AND MODERN SURVEYING TECHNOLOGIES FOR TURKISH CADASTRE,

MOST CADASTRAL MAPS ARE IN PAPER FORMAT,

ANKARA

P. 368

MAMAK

PAFTA.366

P. 365

P. 373

11000

ADA 2000

Salah satu	Genus	Spesies	Penyebaran
1. 1000 m	Alga	Marine Diatoms	
2. 1000 m			
3. 1000 m			
4. 1000 m			
5. 1000 m			
6. 1000 m			
7. 1000 m			
8. 1000 m			
9. 1000 m			
10. 1000 m			

330 m	Arda	<i>Malva sylvestris</i>
350 m		
370 m		
390 m		
410 m	350 m	
430 m	350 m	
450 m	350 m	
470 m	Arda	<i>Malva sylvestris</i>
490 m	Arda	<i>Malva sylvestris</i>
510 m	Arda	<i>Malva sylvestris</i>
530 m	Arda	<i>Malva sylvestris</i>
550 m	Arda	<i>Malva sylvestris</i>
570 m	Arda	<i>Malva sylvestris</i>
590 m	Arda	<i>Malva sylvestris</i>
610 m	Arda	<i>Malva sylvestris</i>
630 m	Arda	<i>Malva sylvestris</i>
650 m	Arda	<i>Malva sylvestris</i>
670 m	Arda	<i>Malva sylvestris</i>
690 m	Arda	<i>Malva sylvestris</i>
710 m	Arda	<i>Malva sylvestris</i>
730 m	Arda	<i>Malva sylvestris</i>
750 m	Arda	<i>Malva sylvestris</i>
770 m	Arda	<i>Malva sylvestris</i>
790 m	Arda	<i>Malva sylvestris</i>
810 m	Arda	<i>Malva sylvestris</i>
830 m	Arda	<i>Malva sylvestris</i>
850 m	Arda	<i>Malva sylvestris</i>
870 m	Arda	<i>Malva sylvestris</i>
890 m	Arda	<i>Malva sylvestris</i>
910 m	Arda	<i>Malva sylvestris</i>
930 m	Arda	<i>Malva sylvestris</i>
950 m	Arda	<i>Malva sylvestris</i>
970 m	Arda	<i>Malva sylvestris</i>
990 m	Arda	<i>Malva sylvestris</i>
1010 m	Arda	<i>Malva sylvestris</i>
1030 m	Arda	<i>Malva sylvestris</i>
1050 m	Arda	<i>Malva sylvestris</i>
1070 m	Arda	<i>Malva sylvestris</i>
1090 m	Arda	<i>Malva sylvestris</i>
1110 m	Arda	<i>Malva sylvestris</i>
1130 m	Arda	<i>Malva sylvestris</i>
1150 m	Arda	<i>Malva sylvestris</i>
1170 m	Arda	<i>Malva sylvestris</i>
1190 m	Arda	<i>Malva sylvestris</i>
1210 m	Arda	<i>Malva sylvestris</i>
1230 m	Arda	<i>Malva sylvestris</i>
1250 m	Arda	<i>Malva sylvestris</i>
1270 m	Arda	<i>Malva sylvestris</i>
1290 m	Arda	<i>Malva sylvestris</i>
1310 m	Arda	<i>Malva sylvestris</i>
1330 m	Arda	<i>Malva sylvestris</i>
1350 m	Arda	<i>Malva sylvestris</i>
1370 m	Arda	<i>Malva sylvestris</i>
1390 m	Arda	<i>Malva sylvestris</i>
1410 m	Arda	<i>Malva sylvestris</i>
1430 m	Arda	<i>Malva sylvestris</i>
1450 m	Arda	<i>Malva sylvestris</i>
1470 m	Arda	<i>Malva sylvestris</i>
1490 m	Arda	<i>Malva sylvestris</i>
1510 m	Arda	<i>Malva sylvestris</i>
1530 m	Arda	<i>Malva sylvestris</i>
1550 m	Arda	<i>Malva sylvestris</i>
1570 m	Arda	<i>Malva sylvestris</i>
1590 m	Arda	<i>Malva sylvestris</i>
1610 m	Arda	<i>Malva sylvestris</i>
1630 m	Arda	<i>Malva sylvestris</i>
1650 m	Arda	<i>Malva sylvestris</i>
1670 m	Arda	<i>Malva sylvestris</i>
1690 m	Arda	<i>Malva sylvestris</i>
1710 m	Arda	<i>Malva sylvestris</i>
1730 m	Arda	<i>Malva sylvestris</i>
1750 m	Arda	<i>Malva sylvestris</i>
1770 m	Arda	<i>Malva sylvestris</i>
1790 m	Arda	<i>Malva sylvestris</i>
1810 m	Arda	<i>Malva sylvestris</i>
1830 m	Arda	<i>Malva sylvestris</i>
1850 m	Arda	<i>Malva sylvestris</i>
1870 m	Arda	<i>Malva sylvestris</i>
1890 m	Arda	<i>Malva sylvestris</i>
1910 m	Arda	<i>Malva sylvestris</i>
1930 m	Arda	<i>Malva sylvestris</i>
1950 m	Arda	<i>Malva sylvestris</i>
1970 m	Arda	<i>Malva sylvestris</i>
1990 m	Arda	<i>Malva sylvestris</i>
2010 m	Arda	<i>Malva sylvestris</i>
2030 m	Arda	<i>Malva sylvestris</i>
2050 m	Arda	<i>Malva sylvestris</i>
2070 m	Arda	<i>Malva sylvestris</i>
2090 m	Arda	<i>Malva sylvestris</i>
2110 m	Arda	<i>Malva sylvestris</i>
2130 m	Arda	<i>Malva sylvestris</i>
2150 m	Arda	<i>Malva sylvestris</i>
2170 m	Arda	<i>Malva sylvestris</i>
2190 m	Arda	<i>Malva sylvestris</i>
2210 m	Arda	<i>Malva sylvestris</i>
2230 m	Arda	<i>Malva sylvestris</i>
2250 m	Arda	<i>Malva sylvestris</i>
2270 m	Arda	<i>Malva sylvestris</i>
2290 m	Arda	<i>Malva sylvestris</i>
2310 m	Arda	<i>Malva sylvestris</i>
2330 m	Arda	<i>Malva sylvestris</i>
2350 m	Arda	<i>Malva sylvestris</i>
2370 m	Arda	<i>Malva sylvestris</i>
2390 m	Arda	<i>Malva sylvestris</i>
2410 m	Arda	<i>Malva sylvestris</i>
2430 m	Arda	<i>Malva sylvestris</i>
2450 m	Arda	<i>Malva sylvestris</i>
2470 m	Arda	<i>Malva sylvestris</i>
2490 m	Arda	<i>Malva sylvestris</i>
2510 m	Arda	<i>Malva sylvestris</i>
2530 m	Arda	<i>Malva sylvestris</i>
2550 m	Arda	<i>Malva sylvestris</i>
2570 m	Arda	<i>Malva sylvestris</i>
2590 m	Arda	<i>Malva sylvestris</i>
2610 m	Arda	<i>Malva sylvestris</i>
2630 m	Arda	<i>Malva sylvestris</i>
2650 m	Arda	<i>Malva sylvestris</i>
2670 m	Arda	<i>Malva sylvestris</i>
2690 m	Arda	<i>Malva sylvestris</i>
2710 m	Arda	<i>Malva sylvestris</i>
2730 m	Arda	<i>Malva sylvestris</i>
2750 m	Arda	<i>Malva sylvestris</i>
2770 m	Arda	<i>Malva sylvestris</i>
2790 m	Arda	<i>Malva sylvestris</i>
2810 m	Arda	<i>Malva sylvestris</i>
2830 m	Arda	<i>Malva sylvestris</i>
2850 m	Arda	<i>Malva sylvestris</i>
2870 m	Arda	<i>Malva sylvestris</i>
2890 m	Arda	<i>Malva sylvestris</i>
2910 m	Arda	<i>Malva sylvestris</i>
2930 m	Arda	<i>Malva sylvestris</i>
2950 m	Arda	<i>Malva sylvestris</i>
2970 m	Arda	<i>Malva sylvestris</i>
2990 m	Arda	<i>Malva sylvestris</i>
3010 m	Arda	<i>Malva sylvestris</i>
3030 m	Arda	<i>Malva sylvestris</i>
3050 m	Arda	<i>Malva sylvestris</i>
3070 m	Arda	<i>Malva sylvestris</i>
3090 m	Arda	<i>Malva sylvestris</i>
3110 m	Arda	<i>Malva sylvestris</i>
3130 m	Arda	<i>Malva sylvestris</i>
3150 m	Arda	<i>Malva sylvestris</i>
3170 m	Arda	<i>Malva sylvestris</i>
3190 m	Arda	<i>Malva sylvestris</i>
3210 m	Arda	<i>Malva sylvestris</i>
3230 m	Arda	<i>Malva sylvestris</i>
3250 m	Arda	<i>Malva sylvestris</i>
3270 m	Arda	<i>Malva sylvestris</i>
3290 m	Arda	<i>Malva sylvestris</i>
3310 m	Arda	<i>Malva sylvestris</i>
3330 m	Arda	<i>Malva sylvestris</i>
3350 m	Arda	<i>Malva sylvestris</i>
3370 m	Arda	<i>Malva sylvestris</i>
3390 m	Arda	<i>Malva sylvestris</i>
3410 m	Arda	<i>Malva sylvestris</i>
3430 m	Arda	<i>Malva sylvestris</i>
3450 m	Arda	<i>Malva sylvestris</i>
3470 m	Arda	<i>Malva sylvestris</i>
3490 m	Arda	<i>Malva sylvestris</i>
3510 m	Arda	<i>Malva sylvestris</i>
3530 m	Arda	<i>Malva sylvestris</i>
3550 m	Arda	<i>Malva sylvestris</i>
3570 m	Arda	<i>Malva sylvestris</i>
3590 m	Arda	<i>Malva sylvestris</i>
3610 m	Arda	<i>Malva sylvestris</i>
3630 m	Arda	<i>Malva sylvestris</i>
3650 m	Arda	<i>Malva sylvestris</i>
3670 m	Arda	<i>Malva sylvestris</i>
3690 m	Arda	<i>Malva sylvestris</i>
3710 m	Arda	<i>Malva sylvestris</i>
3730 m	Arda	<i>Malva sylvestris</i>
3750 m	Arda	<i>Malva sylvestris</i>
3770 m	Arda	<i>Malva sylvestris</i>
3790 m	Arda	<i>Malva sylvestris</i>
3810 m	Arda	<i>Malva sylvestris</i>
3830 m	Arda	<i>Malva sylvestris</i>
3850 m	Arda	<i>Malva sylvestris</i>
3870 m	Arda	<i>Malva sylvestris</i>
3890 m	Arda	<i>Malva sylvestris</i>
3910 m	Arda	<i>Malva sylvestris</i>
3930 m	Arda	<i>Malva sylvestris</i>
3950 m	Arda	<i>Malva sylvestris</i>
3970 m	Arda	<i>Malva sylvestris</i>
3990 m	Arda	<i>Malva sylvestris</i>
4010 m	Arda	<i>Malva sylvestris</i>
4030 m	Arda	<i>Malva sylvestris</i>
4050 m	Arda	<i>Malva sylvestris</i>
4070 m	Arda	<i>Malva sylvestris</i>
4090 m	Arda	<i>Malva sylvestris</i>
4110 m	Arda	<i>Malva sylvestris</i>
4130 m	Arda	<i>Malva sylvestris</i>
4150 m	Arda	<i>Malva sylvestris</i>
4170 m	Arda	<i>Malva sylvestris</i>
4190 m	Arda	<i>Malva sylvestris</i>
4210 m	Arda	<i>Malva sylvestris</i>
4230 m	Arda	<i>Malva sylvestris</i>
4250 m	Arda	<i>Malva sylvestris</i>
4270 m	Arda	<i>Malva sylvestris</i>
4290 m	Arda	<i>Malva sylvestris</i>
4310 m	Arda	<i>Malva sylvestris</i>
4330 m	Arda	<i>Malva sylvestris</i>
4350 m	Arda	<i>Malva sylvestris</i>
4370 m	Arda	<i>Malva sylvestris</i>
4390 m	Arda	<i>Malva sylvestris</i>
4410 m	Arda	<i>Malva sylvestris</i>
4430 m	Arda	<i>Malva sylvestris</i>
4450 m	Arda	<i>Malva sylvestris</i>
4470 m	Arda	<i>Malva sylvestris</i>
4490 m	Arda	<i>Malva sylvestris</i>
4510 m	Arda	<i>Malva sylvestris</i>
4530 m	Arda	<i>Malva sylvestris</i>
4550 m	Arda	<i>Malva sylvestris</i>
4570 m	Arda	<i>Malva sylvestris</i>
4590 m	Arda	<i>Malva sylvestris</i>
4610 m	Arda	<i>Malva sylvestris</i>
4630 m	Arda	<i>Malva sylvestris</i>
4650 m	Arda	<i>Malva sylvestris</i>
4670 m	Arda	<i>Malva sylvestris</i>
4690 m	Arda	<i>Malva sylvestris</i>
4710 m	Arda	<i>Malva sylvestris</i>
4730 m	Arda	<i>Malva sylvestris</i>
4750 m	Arda	<i>Malva sylvestris</i>
4770 m	Arda	<i>Malva sylvestris</i>
4790 m	Arda	<i>Malva sylvestris</i>
4810 m	Arda	<i>Malva sylvestris</i>
4830 m	Arda	<i>Malva sylvestris</i>
4850 m	Arda	<i>Malva sylvestris</i>
4870 m	Arda	<i>Malva sylvestris</i>
4890 m	Arda	<i>Malva sylvestris</i>
4910 m	Arda	<i>Malva sylvestris</i>
4930 m	Arda	<i>Malva sylvestris</i>
4950 m	Arda	<i>Malva sylvestris</i>
4970 m	Arda	<i>Malva sylvestris</i>
4990 m	Arda	<i>Malva sylvestris</i>
5010 m	Arda	<i>Malva sylvestris</i>
5030 m	Arda	<i>Malva sylvestris</i>
5050 m	Arda	<i>Malva sylvestris</i>
5070 m	Arda	<i>Malva sylvestris</i>
5090 m	Arda	<i>Malva sylvestris</i>
5110 m	Arda	<i>Malva sylvestris</i>
5130 m	Arda	<i>Malva sylvestris</i>
5150 m	Arda	<i>Malva sylvestris</i>
5170 m	Arda	<i>Malva sylvestris</i>
5190 m	Arda	<i>Malva sylvestris</i>
5210 m	Arda	<i>Malva sylvestris</i>
5230 m	Arda	<i>Malva sylvestris</i>
5250 m	Arda	<i>Malva sylvestris</i>
5270 m	Arda	<i>Malva sylvestris</i>
5290 m	Arda	<i>Malva sylvestris</i>
5310 m	Arda	<i>Malva sylvestris</i>
5330 m	Arda	<i>Malva sylvestris</i>
5350 m	Arda	<i>Malva sylvestris</i>
5370 m	Arda	<i>Malva sylvestris</i>
5390 m	Arda	<i>Malva sylvestris</i>
5410 m	Arda	<i>Malva sylvestris</i>
5430 m	Arda	<i>Malva sylvestris</i>
5450 m	Arda	<i>Malva sylvestris</i>
5470 m	Arda	<i>Malva sylvestris</i>
5490 m	Arda	<i>Malva sylvestris</i>
5510 m	Arda	<i>Malva sylvestris</i>
5530 m	Arda	<i>Malva sylvestris</i>
5550 m	Arda	<i>Malva sylvestris</i>
5570 m	Arda	<i>Malva sylvestris</i>
5590 m	Arda	<i>Malva sylvestris</i>
5610 m	Arda	<i>Malva sylvestris</i>
5630 m	Arda	<i>Malva sylvestris</i>
5650 m	Arda	<i>Malva sylvestris</i>
5670 m	Arda	<i>Malva sylvestris</i>
5690 m	Arda	<i>Malva sylvestris</i>
5710 m	Arda	<i>Malva sylvestris</i>
5730 m	Arda	<i>Malva sylvestris</i>
5750 m	Arda	<i>Malva sylvestris</i>
5770 m	Arda	<i>Malva sylvestris</i>
5790 m	Arda	<i>Malva sylvestris</i>
5810 m	Arda	<i>Malva sylvestris</i>
5830 m	Arda	<i>Malva sylvestris</i>
5850 m	Arda	<i>Malva sylvestris</i>
5870 m	Arda	<i>Malva sylvestris</i>
5890 m	Arda	<i>Malva sylvestris</i>
5910 m	Arda	<i>Malva sylvestris</i>
5930 m	Arda	<i>Malva sylvestris</i>
5950 m	Arda	<i>Malva sylvestris</i>
5970 m	Arda	<i>Malva sylvestris</i>
5990 m	Arda	<i>Malva sylvestris</i>
6010 m	Arda	<i>Malva sylvestris</i>
6030 m	Arda	<i>Malva sylvestris</i>
6050 m	Arda	<i>Malva sylvestris</i>
6070 m	Arda	<i>Malva sylvestris</i>
6090 m	Arda	<i>Malva sylvestris</i>
6110 m	Arda	<i>Malva sylvestris</i>
6130 m	Arda	<i>Malva sylvestris</i>
6150 m	Arda	<i>Malva sylvestris</i>
6170 m	Arda	<i>Malva sylvestris</i>
6190 m	Arda	<i>Malva sylvestris</i>
6210 m	Arda	<i>Malva sylvestris</i>
6230 m	Arda	<i>Malva sylvestris</i>
6250 m	Arda	<i>Malva sylvestris</i>
6270 m	Arda	<i>Malva sylvestris</i>
6290 m	Arda	<i>Malva sylvestris</i>
6310 m	Arda	<i>Malva sylvestris</i>
6330 m	Arda	<i>Malva sylvestris</i>
6350 m	Arda	<i>Malva sylvestris</i>
6370 m	Arda	<i>Malva sylvestris</i>
6390 m	Arda	<i>Malva sylvestris</i>
6410 m	Arda	<i>Malva sylvestris</i>
6430 m	Arda	<i>Malva sylvestris</i>
6450 m	Arda	<i>Malva sylvestris</i>
6470 m	Arda	<i>Malva sylvestris</i>
6490 m	Arda	<i>Malva sylvestris</i>
6510 m	Arda	<i>Malva sylvestris</i>
6530 m	Arda	<i>Malva sylvestris</i>
6550 m	Arda	<i>Malva sylvestris</i>
6570 m	Arda	<i>Malva sylvestris</i>
6590 m	Arda	<i>Malva sylvestris</i>
6610 m	Arda	<i>Malva sylvestris</i>
6630 m	Arda	<i>Malva sylvestris</i>
6650 m	Arda	<i>Malva sylvestris</i>
6670 m	Arda	<i>Malva sylvestris</i>
6690 m	Arda	<i>Malva sylvestris</i>
6710 m	Arda	<i>Malva sylvestris</i>
6730 m	Arda	<i>Malva sylvestris</i>
6750 m	Arda	<i>Malva sylvestris</i>
6770 m	Arda	<i>Malva sylvestris</i>
6790 m	Arda	<i>Malva sylvestris</i>
6810 m	Arda	<i>Malva sylvestris</i>
6830 m	Arda	<i>Malva sylvestris</i>
6850 m	Arda	<i>Malva sylvestris</i>
6870 m	Arda	<i>Malva sylvestris</i>
6890 m	Arda	<i>Malva sylvestris</i>
6910 m	Arda	<i>Malva sylvestris</i>
6930 m	Arda	<i>Malva sylvestris</i>
6950 m	Arda	<i>Malva sylvestris</i>
6970 m	Arda	<i>Malva sylvestris</i>
6990 m	Arda	<i>Malva sylvestris</i>
7010 m	Arda	<i>Malva sylvestris</i>
7030 m	Arda	<i>Malva sylvestris</i>
7050 m	Arda	<i>Malva sylvestris</i>
7070 m	Arda	<i>Malva sylvestris</i>
7090 m	Arda	<i>Malva sylvestris</i>
7110 m	Arda	<i>Malva sylvestris</i>
7130 m	Arda	<i>Malva sylvestris</i>
7150 m	Arda	<i>Malva sylvestris</i>
7170 m	Arda	<i>Malva sylvestris</i>
7190 m	Arda	<i>Malva sylvestris</i>
7210 m	Arda	<i>Malva sylvestris</i>
7230 m	Arda	<i>Malva sylvestris</i>
7250 m	Arda	<i>Malva sylvestris</i>
7270 m	Arda	<i>Malva sylvestris</i>
7290 m	Arda	<i>Malva sylvestris</i>
7310 m	Arda	<i>Malva sylvestris</i>
7330 m	Arda	<i>Malva sylvestris</i>
7350 m	Arda	<i>Malva sylvestris</i>
7370 m	Arda	<i>Malva sylvestris</i>
7390 m	Arda	<i>Malva sylvestris</i>
7410 m	Arda	<i>Malva sylvestris</i>
7430 m	Arda	<i>Malva sylvestris</i>
7450 m	Arda	

170	100	Arta	Osman Kadizade
176	100	Çarşı E.	Hasan İner
3704	100	3704 E.	Süleyman Sahin

1850 ca	Bahse	Sükh Sahingjil
1860 ca	"	Sal Batavale

ADA 2160

Kuruluş Yılı	Page No	Sahası M ²	Cinsi	Sahibi	Dünyacele
561	7	235.00	Katı Arazi	Mahye Aksoy	
562	8	8340.00	Bağçe	Luftiye Gök	
563	3	3575.00	Bahçe A Ev	Abime Kadıoğlu	
564	2	151.00	K	Ömer Yaşar	
565	9	371.00	Bağçe	Osman Aksoy	
569	4	851.00		Mehmet Kır	
570	10	651.00	Bahçe A Ev	İdris Böke	
571	11	601.00	Bağçe	Nuri Çepel	
572	12	1118.00	K R.E	Tevfik Harman	

ADA 2181

Merfolk No	Barang No	Sahan	Cinsi	Sahibi	Daftar
573	1	861	manah EV	Zalfije Cendak	
574	2	2147	Hulu Arusi	Malaya Maranesi	
575	3	931	Arso	"	
576	4	511	Hulu Arusi	"	

577	1	5383	Bentley de K	Hawa Caribyan
578	2	80	Su. Depoan	*Palyt. Halmu

379	1	1732	Babst A Ev	Laffert Kaym
380	2	920	Babst	Ellert Ouy 12
381	3	919	Deffner ju	" " 13
382	4	1738	Witz Ams	Babst Harmer

582	1	330	rd	Baher	Harro Gashyn
-----	---	-----	----	-------	--------------

ANKARA

ÇANKAYA KIBRIS KÖYÜ

PAFTA:26

P.23

P.25

5000

P.24

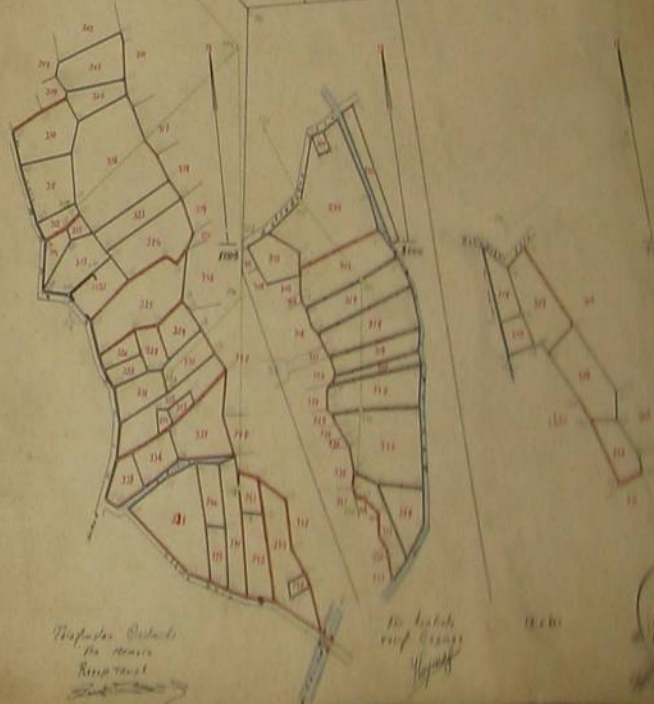
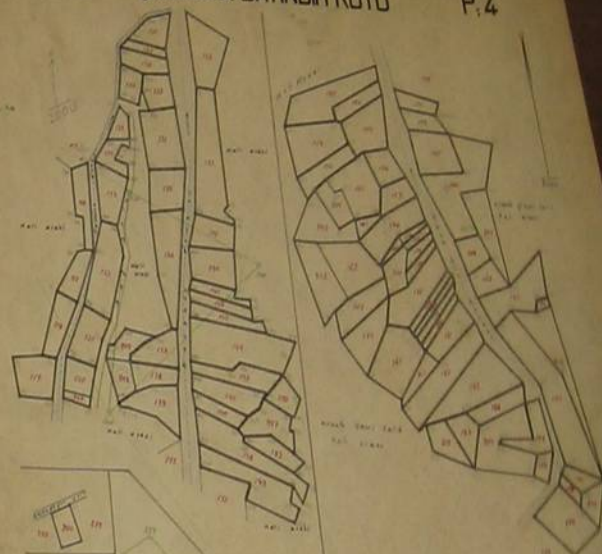
2000

P.27

ANKARA

ÇANKAYA BAYINDIR KÖYÜ

P.4



ANKARA

MAMAK

PAFTA:361

4000

328

P 362



LAND REGISTRY AND CADASTRE PROJECT :

**LOCALITIES MAPS ARE OUT OF DATE AND
DO NOT CORRESPOND WITH THE GROUND LOCATIONS**

AND THE NUMBER OF CADASTRAL DISPUTE RATE IS HIGH

**CADASTRAL DATA MUST BE ACCURATE, RELIABLE AND UP TO
DATE**

**BECAUSE OF THESE REASONS WE START A NEW PROJECT
CALLED LAND REGISTRY AND CADASTRE MODERNIZATION.**



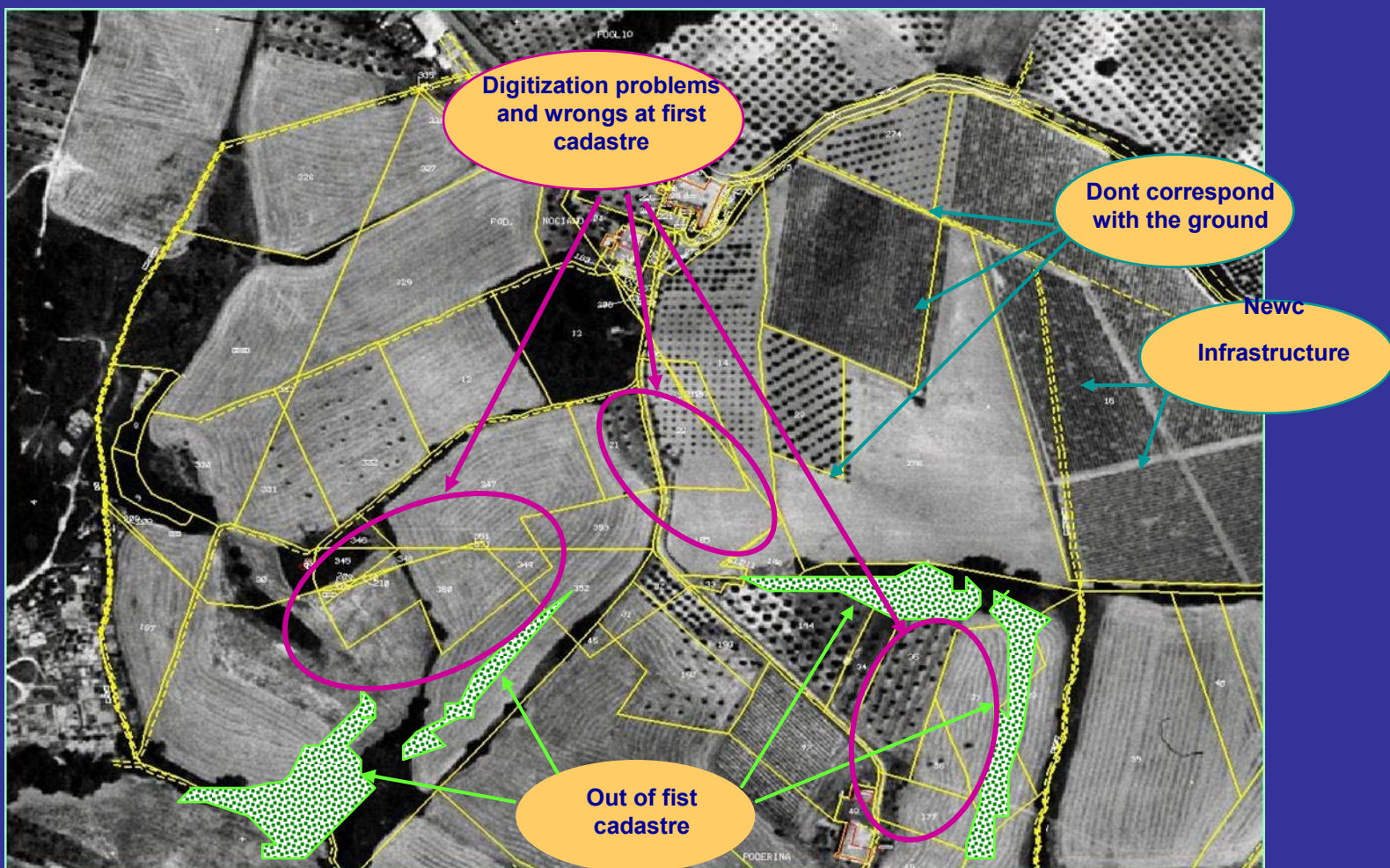
LAND REGISTRY AND CADASTRE PROJECT :





LAND REGISTRY AND CADASTRE PROJECT :

The old cadastre maps do not reflect the current status





LAND REGISTRY AND CADASTRE PROJECT :

FOR LAND REGISTRY AND CADASTRE MODERNIZATION PROJECT, LOAN NEGOTIATIONS WERE HELD ON MARCH 17 – 18, 2008

AND THE PROJECT WAS APPROVED BY THE WORLD BANK BOARD OF EXECUTIVE DIRECTORS ON MAY 1, 2008.

TOTAL FUNDING TO BE PROVIDED BY THE BANK IS US\$ 203 MILLION OVER THE NEXT 5 YEARS AND THE CLOSING DATE IS SEPTEMBER 30, 2013.

THE LOAN AGREEMENT WAS SIGNED ON JUNE 9, 2008. AND DECISIONS OF COUNCIL OF MINISTERS' WILL BE COMPLETED.



LAND REGISTRY AND CADASTRE PROJECT :

PROJECT SCOPE AND OBJECTIVES

THE OVERALL GOAL OF THE PROJECT IS TO CONTRIBUTE TO GOVERNMENT AGENDA TO IMPROVE QUALITY AND EFFECTIVENESS OF PUBLIC SERVICES THROUGH SPREADING AND MAKING EFFECTIVE E-GOVERNMENT APPLICATIONS.

THE SPECIFIC OBJECTIVE OF THE PROPOSED PROJECT IS TO IMPROVE THE EFFECTIVENESS AND EFFICIENCY OF THE LAND REGISTRY AND CADASTRE SERVICE.



DESCRIPTION OF PROJECT COMPONENTS AND SUB-COMPONENTS :

1-CADASTRE AND LAND REGISTRY RENOVATION AND UPDATING

A)CADASTRE RENOVATION:

THE COMPONENT WILL UPDATE AROUND 4.1 MILLION PRIORITY PARCELS OF 55 MILLION REAL ESTATE PARCELS IN TURKEY OVER 5 YEAR PROJECT PERIOD.

THE PRIORITY AREAS WERE CHOSEN ON THE GROUNDS DEMAND AND ECONOMIC POTENTIAL SUCH AS İSTANBUL, ANKARA, İZMİR, ANTALYA, BURSA, GAZİANTEP

UPDATED ,ACCURATE, CONSISTENT AND STANDARDIZED LEGALLY AGREED CADASTRAL RENOVATED DIGITAL MAPS AND DATA SETS WILL BE AVAILABLE FOR ENTRY INTO TAKBIS



DESCRIPTION OF PROJECT COMPONENTS AND SUB-COMPONENTS :

B)BASE MAPPING IN SELECTED AREAS

**IT IS A PART OF OUR RESPONSIBILITY FOR THE NATIONAL
SPATIAL DATA INFRASTRUCTURE AROUND 40.000 sq KM OF
BASE MAPS INCLUDING ORTHOPHOTO MAPS WILL BE
PRODUCED.**

C)SUPERVISION AND QUALITY CONTROL.



DESCRIPTION OF PROJECT COMPONENTS AND SUB-COMPONENTS :

2-IMPROVED SERVICE DELIVERY

THE COMPONENT WILL IMPROVE TKGM'S ABILITY TO PROVIDE ITS CORE SERVICES TO THE GOVERNMENT AND THE CITIZENS.

A) CADASTRE INTEGRATION CONSULTANCY SUPPORT :

THE IMPLEMENTATION OF AN INTEGRATED (LAND REGISTRY AND CADASTRE) VERSION OF TAKBIS IS ESSENTIAL FOR THE FUTURE EFFICIENT AND EFFECTIVE FUNCTIONING OF BOTH THE LAND REGISTRY AND CADASTRE DIRECTORATES SO AS TO MEET TKGM'S STATUTORY RESPONSIBILITIES AND SPECIFIC GOVERNMENT INITIATIVES SUCH AS THE E-GOVERNMENT PROGRAMME AND THE ESTABLISHMENT.



DESCRIPTION OF PROJECT COMPONENTS AND SUB-COMPONENTS :

B) MODEL OFFICES :

TO PROVIDE EXAMPLES OF MODEL OFFICE LAYOUTS IN EACH OF THE PROJECT REGIONS THAT TAKES ADVANTAGE OF THE OPPORTUNITIES FOR THE STREAMLINING OF WORKFLOWS INVOLVING REGISTRATION AND CADASTRE PROCESSES WHEN THE LAND REGISTRY AND CADASTRE DIRECTORATES ARE CO-LOCATED, CADASTRE RENOVATION WORK IS LARGELY COMPLETED AND THE INTEGRATED CADASTRE AND REGISTRATION VERSION OF TAKBIS HAS BEEN IMPLEMENTED.

C) INTEGRATION OF E-CADASTRE INTO THE NSDI

UP DATED AND CONSISTENT VERSION OF THE CADASTRE AVAILABLE THROUGH THE TURKISH NSDI



DESCRIPTION OF PROJECT COMPONENTS AND SUB-COMPONENTS :

3- HUMAN RESOURCES AND INSTITUTIONAL DEVELOPMENT

**THE COMPONENT WILL SUPPORT THE DEVELOPMENT OF HUMAN
RESOURCES STRATEGY PLANS,
VIDEO CONFERENCING, TRAINING AND STUDY VISITS**

4- PROPERTY VALUATION

**THE COMPONENT WILL INVESTIGATE AND DEVELOP POLICIES FOR
THE PROPERTY VALUATION FUNCTION IN TURKEY IN LINE WITH
INTERNATIONAL PRACTICES. THE COMPONENT WILL FINANCE
POLICY DEVELOPMENT, TWO PILOT IMPLEMENTATION AND
CAPACITY BUILDING.**



RESULTS

CADASTRAL INFORMATION WILL BE RENOVATED SO AS TO BE DIGITAL, UPDATED, CONSISTENT WITH THE SITE AND LEGALLY VALID, THUS IT WILL BE BASIS FOR SPATIAL INFORMATION SYSTEM.

THE RESULTING PRODUCTS WILL ALSO BE MADE AVAILABLE TO PUBLIC AND PRIVATE SECTOR . MUNICIPALITIES WILL USE AS A BASE MAP FOR THEIR INFORMATION SYSTEM.

THE BETTER QUALITY OF CADASTRAL DATA WILL NOT ONLY BE REFLECTED IN THE CADASTRAL AND LAND REGISTRY OFFICES SERVICES PROVIDED BY THEM BUT ALSO WILL AFFECT OTHER AGENCIES WHERE LAND INFORMATION IS USED.

THE OPERATION OF THE NEW LAND REGISTRY AND CADASTRE OFFICES WILL PROVIDE A MODEL FOR CHANGES IN OTHER TKGM OFFICES



RESULTS

**THIS PROJECT WILL IMPROVE CUSTOMER SATISFACTION
OF CADASTRE SERVICES**

**WILL REDUCE NUMBER OF CADASTRE DISPUTES IN
COURTS**

WILL INCREASE IN NUMBER OF TRANSACTIONS PER STAFF

**EXTERNAL USERS WILL HAVE ONLINE ACCESS TO DIGITAL
LAND REGISTRY CADASTRE INFORMATION.**



BEST REGARDS...

